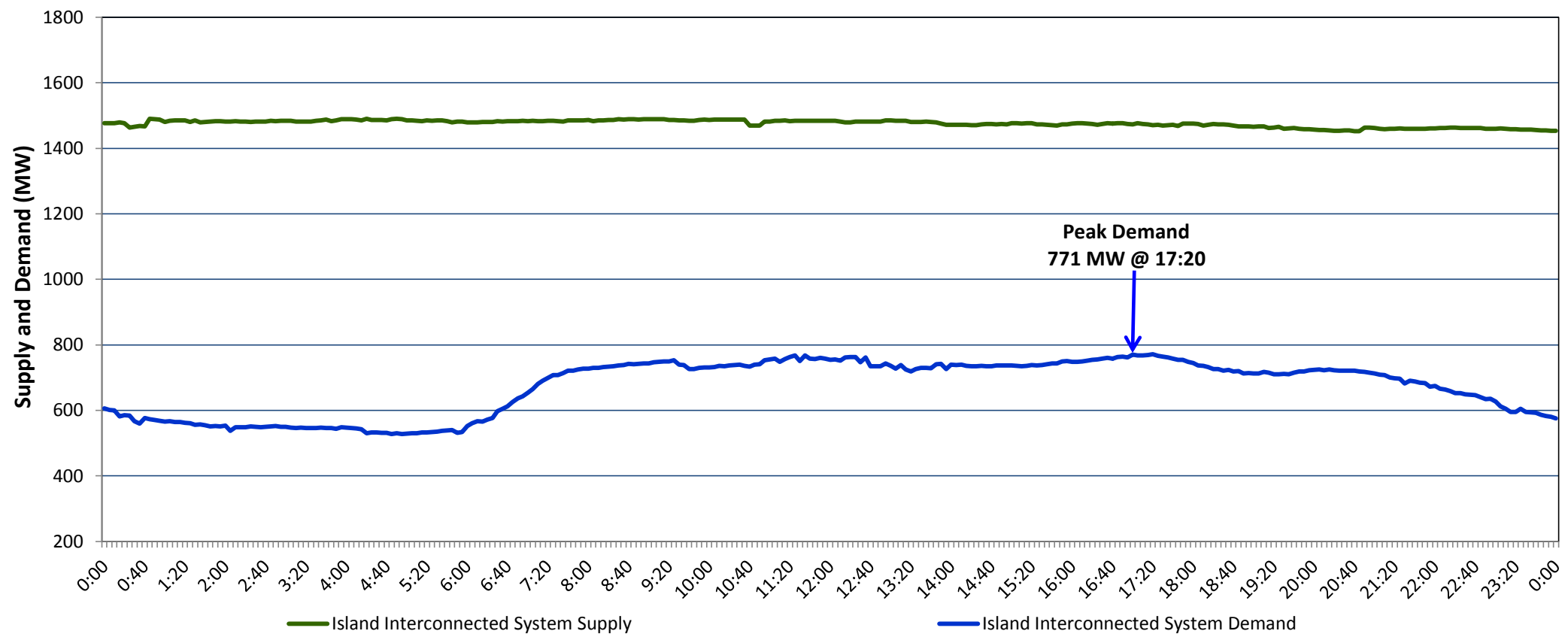


**Newfoundland Labrador Hydro (NLH)
Supply and Demand Status Report Filed Monday, September 11, 2017**

**Section 1
Island Interconnected System Supply and Demand
Actual 24 Hour System Performance For Friday, September 08, 2017**



Supply Notes For September 08, 2017

- ^{1,2}
- A As of 1858 hours, June 22, 2017, Stephenville Gas Turbine available at 25 MW (50 MW).
 - B As of 0938 hours, June 23, 2017, Holyrood Unit 1 unavailable due to planned outage 120 MW (170 MW).
 - C As of 0827 hours, July 31, 2017, Holyrood Unit 2 unavailable due to planned outage 165 MW (170 MW).
 - D As of 0828 hours, August 27, 2017, Bay d'Espoir Unit 7 unavailable due to planned outage (154.4 MW).
 - E As of 1704 hours, August 31, 2017, Hardwoods Gas Turbine available at 25 MW (50 MW).
 - F As of 1624 hours, September 03, 2017, Hawke's Bay Diesel Plant available at 2.5 MW due to a planned outage (5 MW).
 - G At 1745 hours, September 08, 2017, Paradise River Unit available (8 MW).

**Section 2
Island Interconnected Supply and Demand**

Sat, Sep 09, 2017	Island System Outlook ³	Seven-Day Forecast	Temperature (°C)		Island System Daily Peak Demand (MW) Forecast
			Morning	Evening	
Available Island System Supply: ⁵	1,440 MW	Saturday, September 09, 2017	16	14	785
NLH Generation: ⁴	1,145 MW	Sunday, September 10, 2017	15	13	825
NLH Power Purchases: ⁶	100 MW	Monday, September 11, 2017	13	14	875
Other Island Generation:	195 MW	Tuesday, September 12, 2017	13	14	865
Current St. John's Temperature:	14 °C	Wednesday, September 13, 2017	13	13	840
Current St. John's Windchill:	N/A °C	Thursday, September 14, 2017	13	13	825
7-Day Island Peak Demand Forecast:	875 MW	Friday, September 15, 2017	14	12	820

Supply Notes For September 09, 2017

- ³
- Notes:
1. Generation outages for running and corrective maintenance are included. These are not unusual for power system operations. They generally do not impact customer supply. The power system operators schedule outages to system equipment whenever possible to coincide with periods when customer demands are low and sufficient supply reserves are available. However, from time to time equipment outages are necessary and reserves may be impacted.
 2. Due to the Island Interconnected System being isolated from the larger North American grid, when there is a sudden loss of large generating units some customer's load must be interrupted for short periods to bring generation output equal to customer demand. This automatic action of power system protection, referred to as under frequency load shedding, is necessary to ensure the integrity and reliability of system equipment. Under frequency events typically occur 5 to 8 times per year on the Island Interconnected System and the resultant customer load interruptions are generally less than 30 minutes.
 3. As of 0800 Hours.
 4. Gross output including station service at Holyrood (24.5 MW) and improved NLH hydraulic output due to water levels (35 MW).
 5. Gross output from all Island sources (including Note 4).
 6. NLH Power Purchases include: CBPP Co-Gen, Nalcor Exploits, Rattle Brook, Star Lake, Vale capacity assistance (when applicable), and Wind Generation.

**Section 3
Island Peak Demand Information
Previous Day Actual Peak and Current Day Forecast Peak**

Fri, Sep 08, 2017	Actual Island Peak Demand ⁸	17:20	771 MW
Sat, Sep 09, 2017	Forecast Island Peak Demand		785 MW

- Notes: ⁸ Island Demand is supplied by NLH generation and purchases, plus generation owned and operated by Newfoundland Power and Corner Brook Pulp & Paper (Deer Lake Power, DLP).